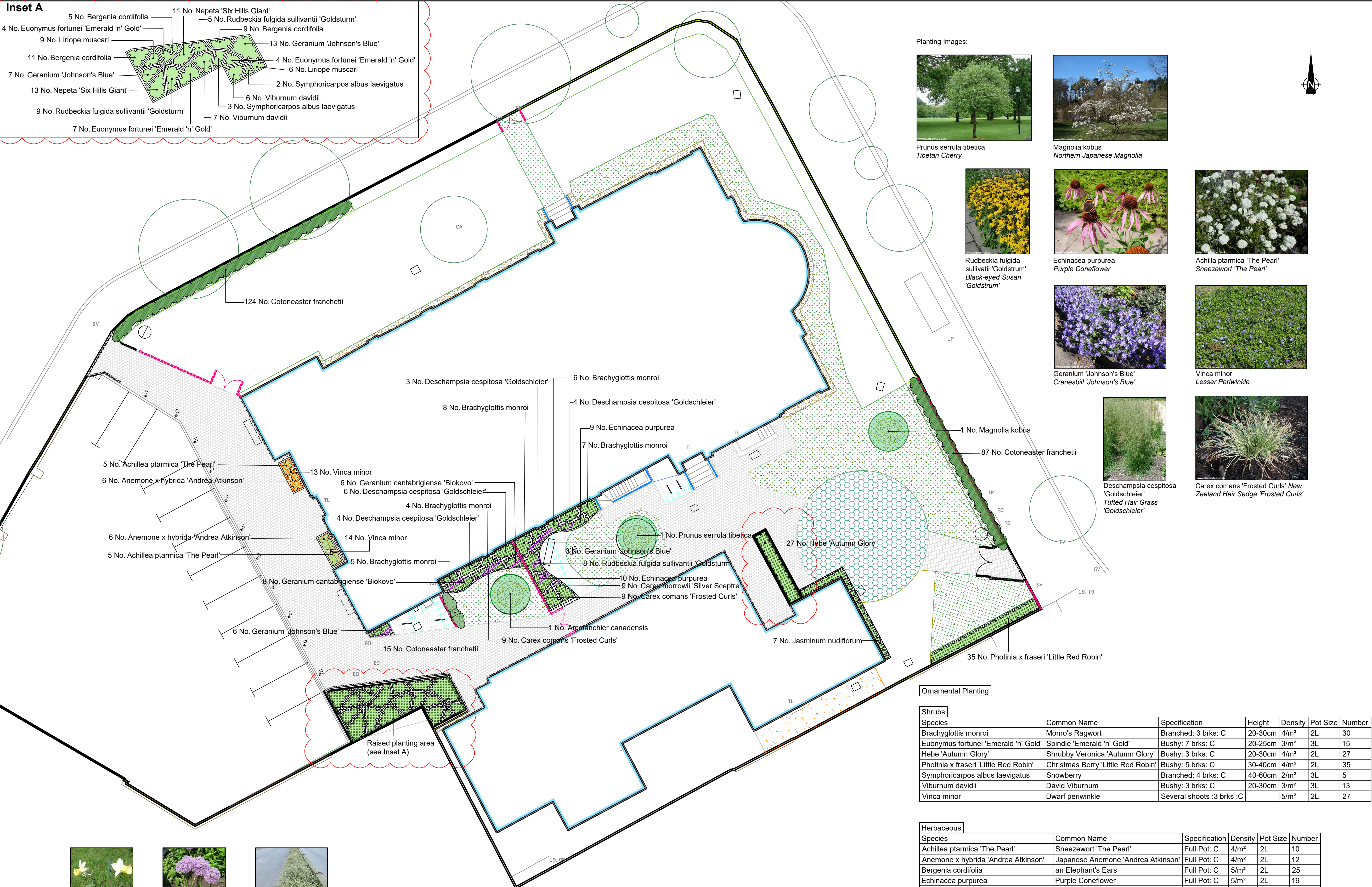


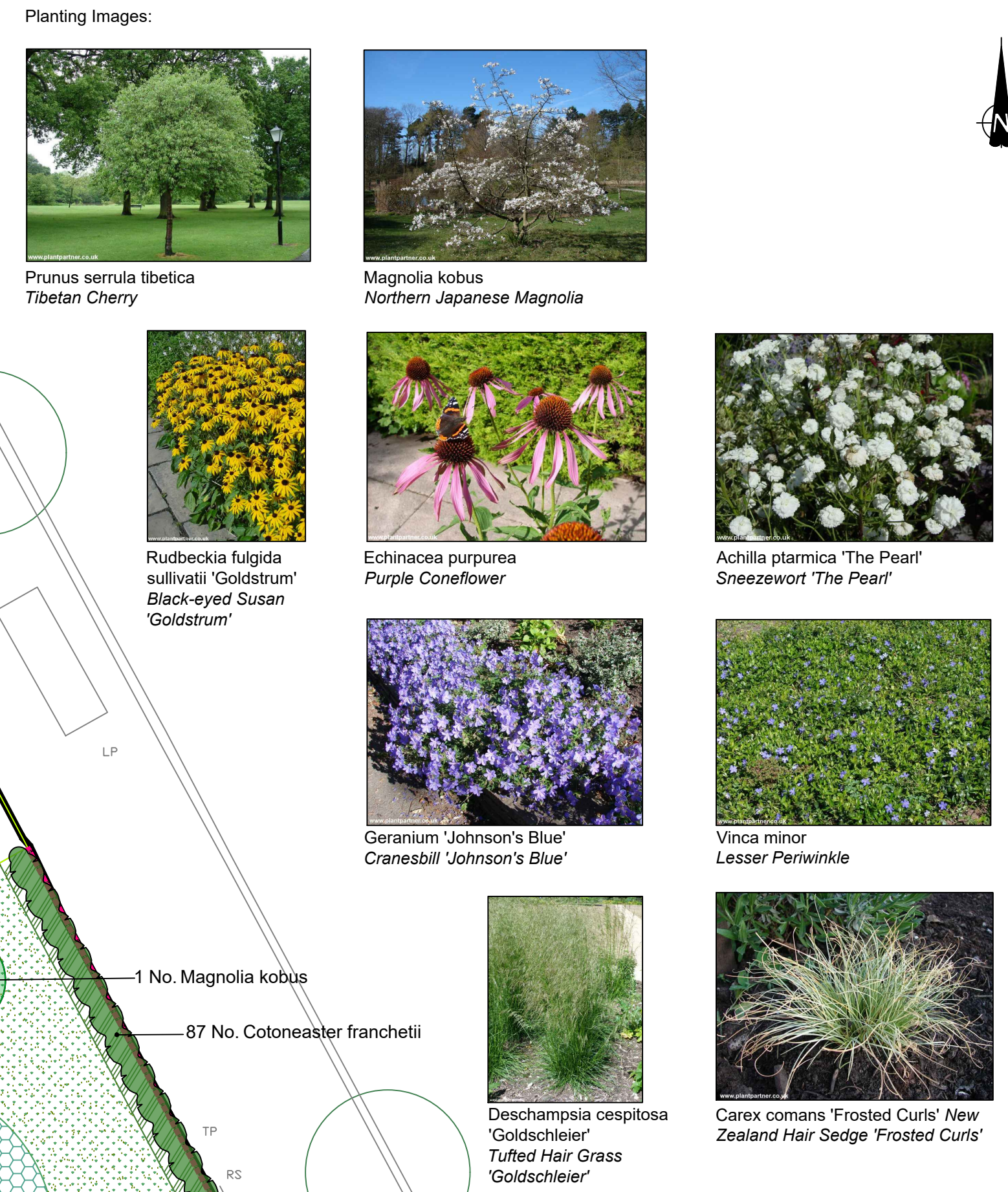
- Inset A**
- 5 No. *Bergenia cordifolia*
  - 4 No. *Euonymus fortunei* 'Emerald 'n' Gold'
  - 9 No. *Liriope muscari*
  - 11 No. *Bergenia cordifolia*
  - 7 No. *Geranium* 'Johnson's Blue'
  - 13 No. *Nepeta* 'Six Hills Giant'
  - 9 No. *Rudbeckia fulgida sultivantii* 'Goldsturm'
  - 7 No. *Euonymus fortunei* 'Emerald 'n' Gold'
  - 11 No. *Nepeta* 'Six Hills Giant'
  - 5 No. *Rudbeckia fulgida sultivantii* 'Goldsturm'
  - 9 No. *Bergenia cordifolia*
  - 13 No. *Geranium* 'Johnson's Blue'
  - 4 No. *Euonymus fortunei* 'Emerald 'n' Gold'
  - 6 No. *Liriope muscari*
  - 2 No. *Symphoricarpos albus laevigatus*
  - 6 No. *Viburnum davidii*
  - 3 No. *Symphoricarpos albus laevigatus*
  - 7 No. *Viburnum davidii*



DO NOT SCALE FROM THIS DRAWING

- KEY**
- Small trees
  - Ornamental shrub and herbaceous planting
  - Hedge
  - Evergreen groundcover planting
  - Amenity Grass Seed Mix: Popular Hardwearing, supplier by Germinal or similar approved, sown at a rate of 35g/m<sup>2</sup>. Total area: approx 177 m<sup>2</sup>
  - Bulbs: Narcissus 'February Silver', planted at a rate of 44g/m<sup>2</sup>; Allium aflatunense, planted at a rate of 20g/m<sup>2</sup>; Allium caninum pulchellum album, planted at a rate of 100 g/m<sup>2</sup>. Total area: approx 13m<sup>2</sup>

- General Planting Notes:**
- Tree protection will be in place prior to works commencing. Any existing trees to be retained, are the responsibility of the main contractor on site who will take all necessary protective measures set out in BS 5837:2012.
  - Contractor to locate and protect any underground services.
  - All areas of proposed planting affected by construction works to be relieved of compaction by ripping to a depth of 600mm, in two directions. Following planting, wet full depth of topsoil without displacing soil. If water supply is likely to be restricted, do not carry out planting until instructed. Works to be carried out while soil and weather conditions are suitable; do not plant during periods of frost or strong winds.
  - All groundworks and planting operations will be in accordance with the following British Standards:
    - BS 3882 Specification for Topsoil
    - BS 4428 Code of Practice for General Landscape Operations
    - BS 8545 Trees from Nursery to Independence in the Landscape
  - Effective weed control will be carried out prior to cultivation. All planting areas to be cultivated to a depth of 300mm, except within 4.0m of any existing tree stem.
  - Topsoil depths to be: 300mm for trees and shrubs. Good quality on site topsoil can be used, otherwise imported topsoil should be to BS3882:2015 (multipurpose sandy loam).
  - Tree Pits will be dug by the landscape contractor. Pits for containerised shrubs and larger trees to be no deeper than root system and wide enough to accommodate roots when fully spread. Tree pits to be backfilled with 300mm topsoil, 300mm subsoil.
  - Any deciduous trees and shrubs to be planted in late October to late March. Any conifers and evergreens to be planted in September/October or April/May. Container grown plants may be planted at any time of year.
  - Apply peat-free tree and shrub planting compost by thoroughly incorporating it with topsoil into planting holes.
  - All shrubs will be watered in on planting with 20 litres per square. Trees will be watered in with 25 litres per tree position.
  - Standard trees to be supported by 2no. 75mm diameter x 1900mm double stake, cross-bar and tie.
  - Tree pit root barriers to be included wherever the installed rootball will be within 3 m of an existing underground service route and/or within 2 m of a building foundation.
  - Surface mulching to be supplied to all planting to a depth of 75mm of ornamental bark mulch.
  - All planting areas to be maintained weed free. Any dead or diseased plants will be replaced during the following planting season. Watering to be carried out as necessary to allow plants to thrive through the 5-year establishment maintenance period.



**Ornamental Planting**

Species	Common Name	Specification	Height	Density	Pot Size	Number
Brachyglottis monroi	Monro's Ragwort	Branched: 3 brks: C	20-30cm	4/m <sup>2</sup>	2L	30
Euonymus fortunei 'Emerald 'n' Gold'	Spindle 'Emerald 'n' Gold'	Bushy: 7 brks: C	20-25cm	3/m <sup>2</sup>	3L	15
Hebe 'Autumn Glory'	Shrubby Veronica 'Autumn Glory'	Bushy: 3 brks: C	20-30cm	4/m <sup>2</sup>	2L	27
Photinia x fraseri 'Little Red Robin'	Christmas Berry 'Little Red Robin'	Bushy: 5 brks: C	30-40cm	4/m <sup>2</sup>	2L	35
Symphoricarpos albus laevigatus	Snowberry	Branched: 4 brks: C	40-60cm	2/m <sup>2</sup>	3L	5
Viburnum davidii	David Viburnum	Bushy: 3 brks: C	20-30cm	3/m <sup>2</sup>	3L	13
Vinca minor	Dwarf periwinkle	Several shoots :3 brks :C		5/m <sup>2</sup>	2L	27

**Herbaceous**

Species	Common Name	Specification	Density	Pot Size	Number
Achillea ptarmica 'The Pearl'	Sneezewort 'The Pearl'	Full Pot: C	4/m <sup>2</sup>	2L	10
Anemone x hybrida 'Andrea Atkinson'	Japanese Anemone 'Andrea Atkinson'	Full Pot: C	4/m <sup>2</sup>	2L	12
Bergenia cordifolia	an Elephant's Ears	Full Pot: C	5/m <sup>2</sup>	2L	25
Echinacea purpurea	Purple Coneflower	Full Pot: C	5/m <sup>2</sup>	2L	19
Geranium 'Johnson's Blue'	Cranesbill 'Johnson's Blue'	Full Pot :C	4/m <sup>2</sup>	2L	9
Geranium 'Johnson's Blue'	Cranesbill 'Johnson's Blue'	Full Pot :C	4/m <sup>2</sup>	2L	20
Geranium cantabrigiense 'Biokovo'		Full Pot :C	4/m <sup>2</sup>	2L	14
Nepeta 'Six Hills Giant'	Catmint 'Six Hills Giant'	Full Pot: C	5/m <sup>2</sup>	2L	24
Rudbeckia fulgida sultivantii 'Goldsturm'	Black-eyed Susan 'Goldsturm'	Full Pot: C	4/m <sup>2</sup>	2L	22

**Climbers**

Species	Common Name	Specification	Density	Pot Size	Number
Jasminum nudiflorum	Winter Jasmine	Caned: Several Shoots: 3 brks: C	1/m <sup>2</sup>	2L	7

**Grasses**

Species	Common Name	Specification	Density	Pot Size	Number
Carex comans 'Frosted Curls'	New Zealand Hair Sedge 'Frosted Curls'	Full Pot: C	5/m <sup>2</sup>	2L	18
Carex morrowii 'Silver Sceptre'		Full Pot: C	5/m <sup>2</sup>	2L	9
Deschampsia cespitosa 'Goldschleier'	Tufted Hair Grass 'Goldschleier'	Full Pot: C	3/m <sup>2</sup>	2L	17
Liriope muscari	Big Blue Lilyturf	Full Pot: C	6/m <sup>2</sup>	2L	15

**Planting Schedule**

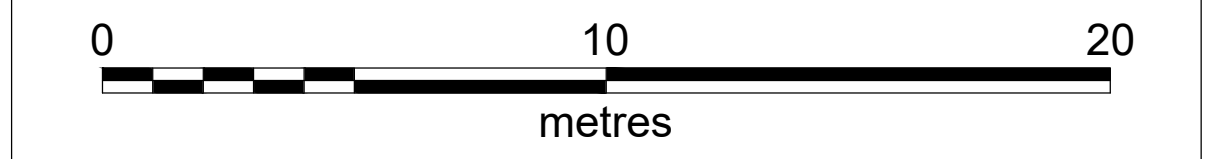
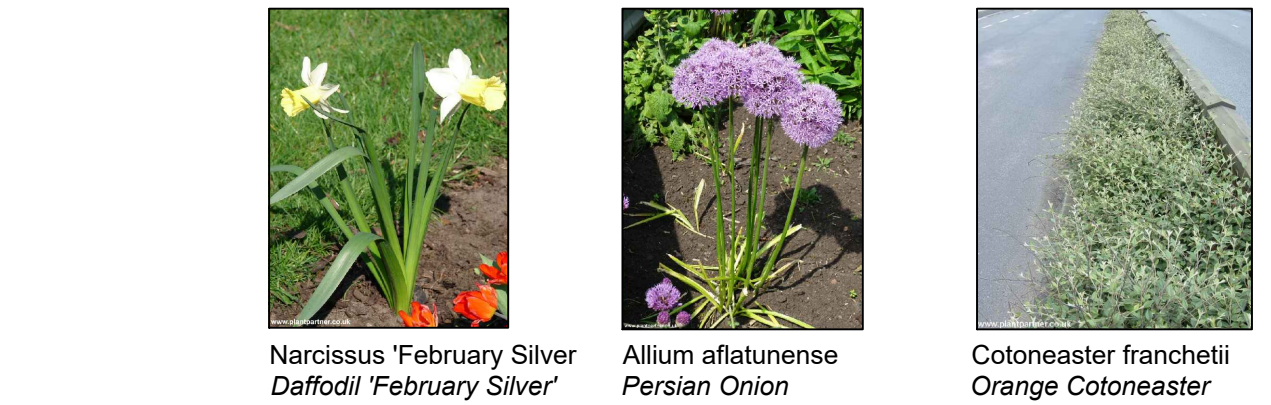
Species	Common Name	Specification	Height	Girth	Number
Amelanchier canadensis	Shadbush	Standard: 3 brks: 2x: B: Clear Stem 150-175cm	250-300cm	8-10cm	1
Magnolia kobus	Northern Japanese Magnolia	Standard: 3 brks: 2x: RB: Clear Stem 150-175cm	250-300cm	8-10cm	1
Prunus serrula tibetica	Tibetan Cherry	Standard: 3 brks: 2x: B: Clear Stem 150-175cm	250-300cm	8-10cm	1

**Hedge**

Species	Common Name	Specification	Height	Density	Pot Size	Number
Cotoneaster franchetii	Orange Cotoneaster	0/2 :Cutting :Branched :3 brks :BR	60-80cm	0.33C/r Double Staggered at 0.5m offset		226

**Shrubs**

Species	Common Name	Specification	Height	Density	Pot Size	Number
Cotoneaster franchetii	Orange Cotoneaster	0/2 :Cutting :Branched :3 brks :BR	60-80cm	0.33C/r Double Staggered at 0.5m offset		226



**ST MARY THE VIRGIN MONKSEATON**

**CHURCH GROUNDS REVELOPMENT LANDSCAPE DESIGN**

**SOFTWARES PLAN**

DRG No: NT14803-004 REV: P02

DRG SIZE: A1 SCALE: 1:150 DATE: August 2021

DRAWN BY: JW CHECKED BY: AC APPROVED BY: AC

wardell armstrong